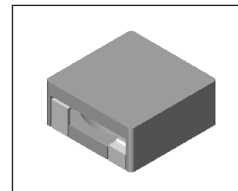


SMT Power Inductor

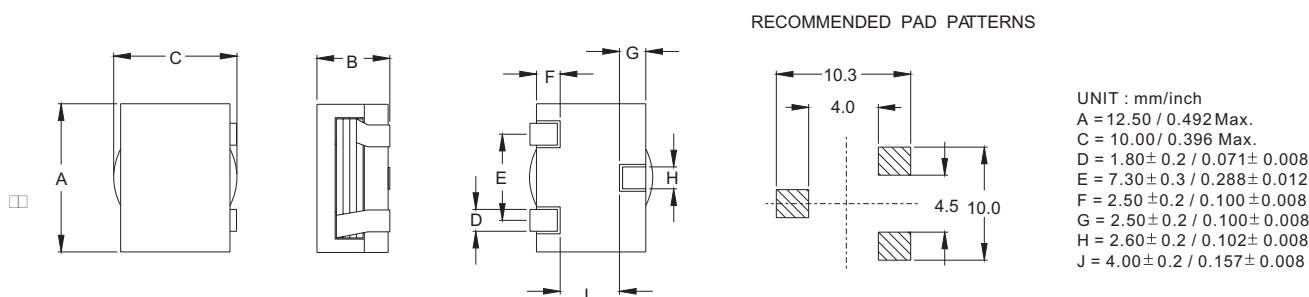
HMS1355, 1360(M)(MH) & 1365MH Type

Features

- RoHS compliant.
- Low profile, SMD type.
- High current.
- Magnetic shielded.
- High energy storage and low DCR.
- Provided with embossed carrier tape packing.
- Ideal for power source circuits, DC-DC converter, DC-AC inverters inductor applications.
- In addition to the standard versions shown here, customized inductors are available to meet your exact requirements.



Mechanical Dimension :



Electrical Characteristics : 25°C, 100KHz, 1V

PART NO.	L_o^1 (μ H)	L_i (μ H) MIN.	DCR (m Ω) MAX	I_{sat}^2 (A dc)	I_{rms}^3 (A dc)	HEIGHT "B" (mm/inch) MAX.
HMS1355-2R0	2.00	1.60	4.9	20.4	14.0	5.5 / 0.216
HMS1355-2R9	2.90	2.32	7.5	16.0	12.0	5.5 / 0.216
HMS1355M-9R0	9.00	7.20	11.5	8.0	10.0	5.5 / 0.216
HMS1355M-120	12.00	9.60	15.0	7.0	8.0	5.5 / 0.216
HMS1355M-150	15.00	12.00	20.0	6.0	6.0	5.5 / 0.215
HMS1360-0R3	0.30	0.24	1.2	40.0	32.0	6.0 / 0.236
HMS1360MH-R45	0.45	0.36	1.5	48.0	30.0	6.0 / 0.236
HMS1360-0R7	0.70	0.56	2.0	32.0	23.0	6.0 / 0.236
HMS1360MH-R75	0.75	0.60	2.3	45.0	20.0	6.0 / 0.236
HMS1360M-0R8	0.80	0.64	1.2	28.5	32.0	6.0 / 0.236
HMS1360MH-1R0	1.00	0.80	2.3	32.0	20.0	6.0 / 0.236
HMS1360-1R2	1.20	0.96	3.1	25.6	18.0	6.0 / 0.236
HMS1360M-1R7	1.70	1.36	2.0	18.0	23.0	6.0 / 0.236
HMS1360MH-2R0	2.00	1.50	3.6	22.5	15.0	6.0 / 0.236
HMS1360M-3R0	3.00	2.40	3.1	14.0	18.0	6.0 / 0.236
HMS1360M-4R8	4.80	3.84	4.9	11.0	14.0	6.0 / 0.236
HMS1360M-6R8	6.80	5.44	7.5	9.0	12.0	6.0 / 0.236
HMS1365MH-2R0	2.00	1.50	3.4	22.5	16.0	6.5 / 0.256

1. Tolerance of inductance is $\pm 20\%$.
2. I_{sat} is the DC current which cause the inductance drop to L_i .
3. I_{rms} is the DC current which cause the surface temperature of the part increase less than 45°C.
4. Operating temperature : -20°C to 105°C (including self-temperature rise).



DELTA ELECTRONICS, INC.

(TAOYUAN PLANT CPBG) 252, SAN YING ROAD, KUEISAN INDUSTRIAL ZONE, TAOYUAN SHIEN, 333, TAIWAN, R.O.C.
 TEL: 886-3-3591968; FAX: 886-3-3591991
<http://www.deltaww.com>